

# Goldenrod

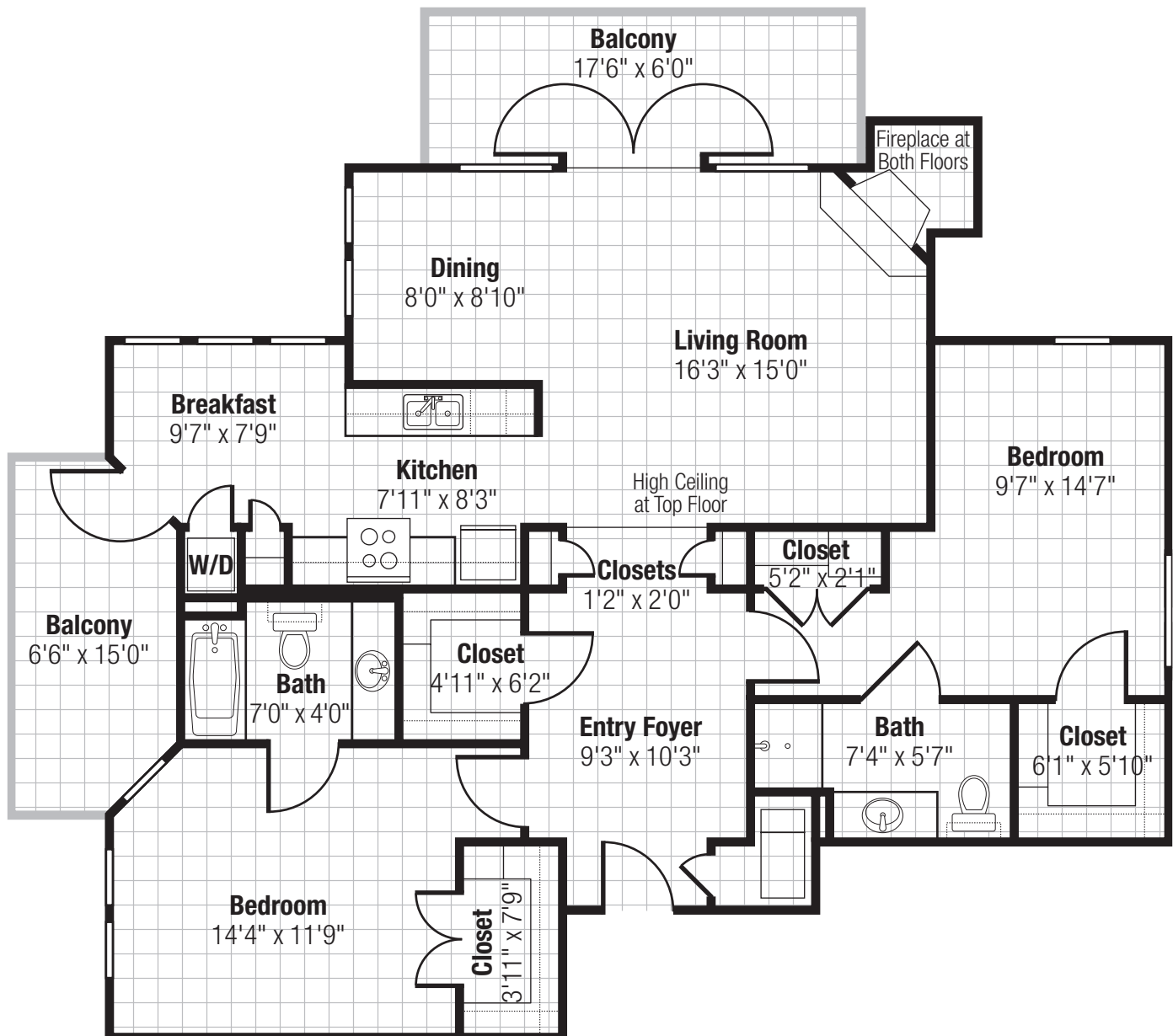
Two-Bedroom, Two-Bath

## Interior Living Space

1,260 Square Feet

## Balcony Space

210 Square Feet



Floor plans are representative. Actual measurements and layout may vary.



23500 Cristo Rey Drive, Cupertino, CA 95014  
650.944.0100 | theforum-seniorliving.com

DRE# 01940673 COA #204 CA RCFE #435200344  
Managed by Life Care Services®

# Fern

Two-Bedroom, Two-Bath

## Interior Living Space

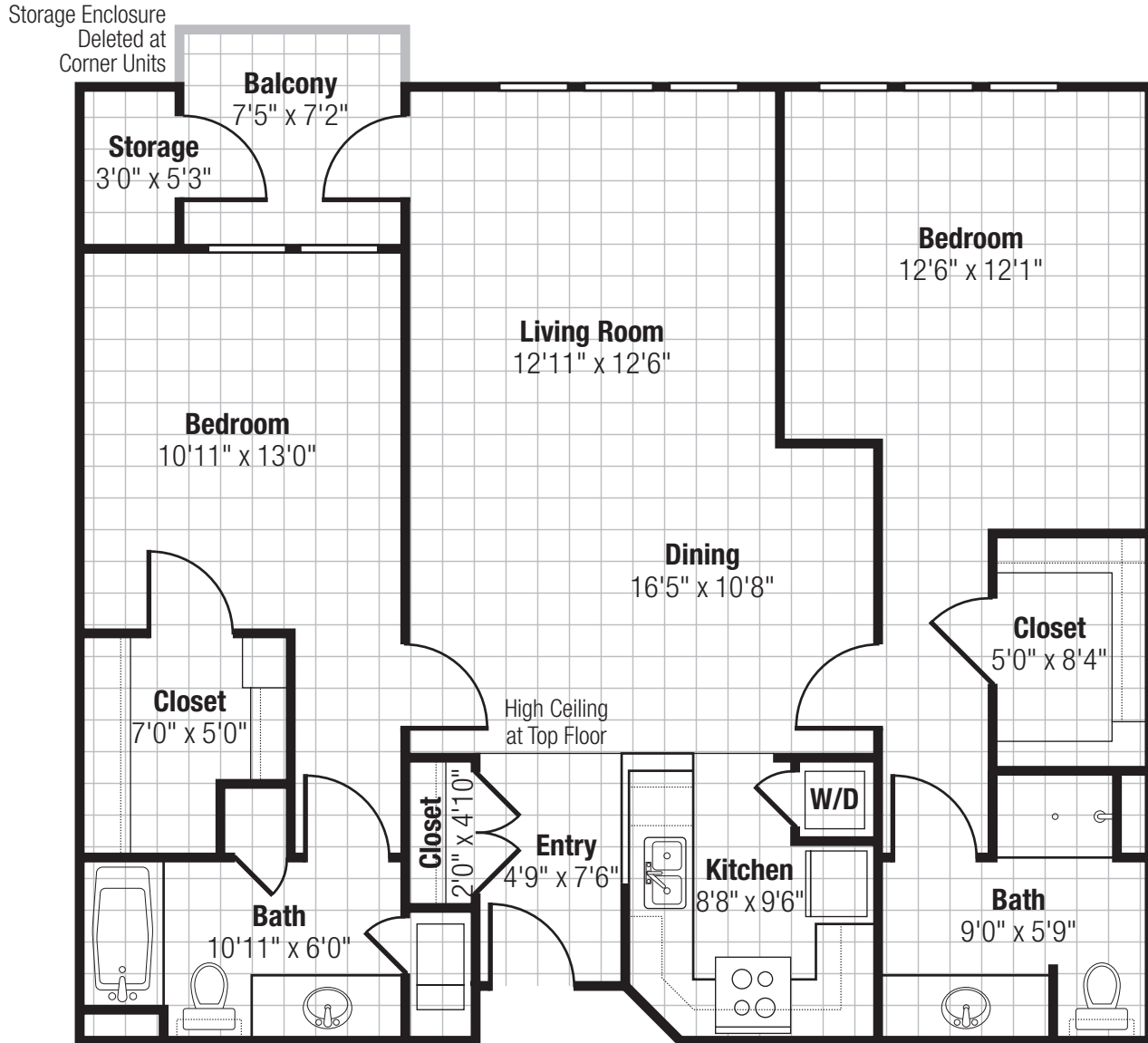
1,170 Square Feet

## Balcony Space

60 Square Feet

## Storage Space

17 Square Feet



Floor plans are representative. Actual measurements and layout may vary.



23500 Cristo Rey Drive, Cupertino, CA 95014  
650.944.0100 | theforum-seniorliving.com

DRE# 01940673 COA #204 CA RCFE #435200344  
Managed by Life Care Services®

# Evergreen

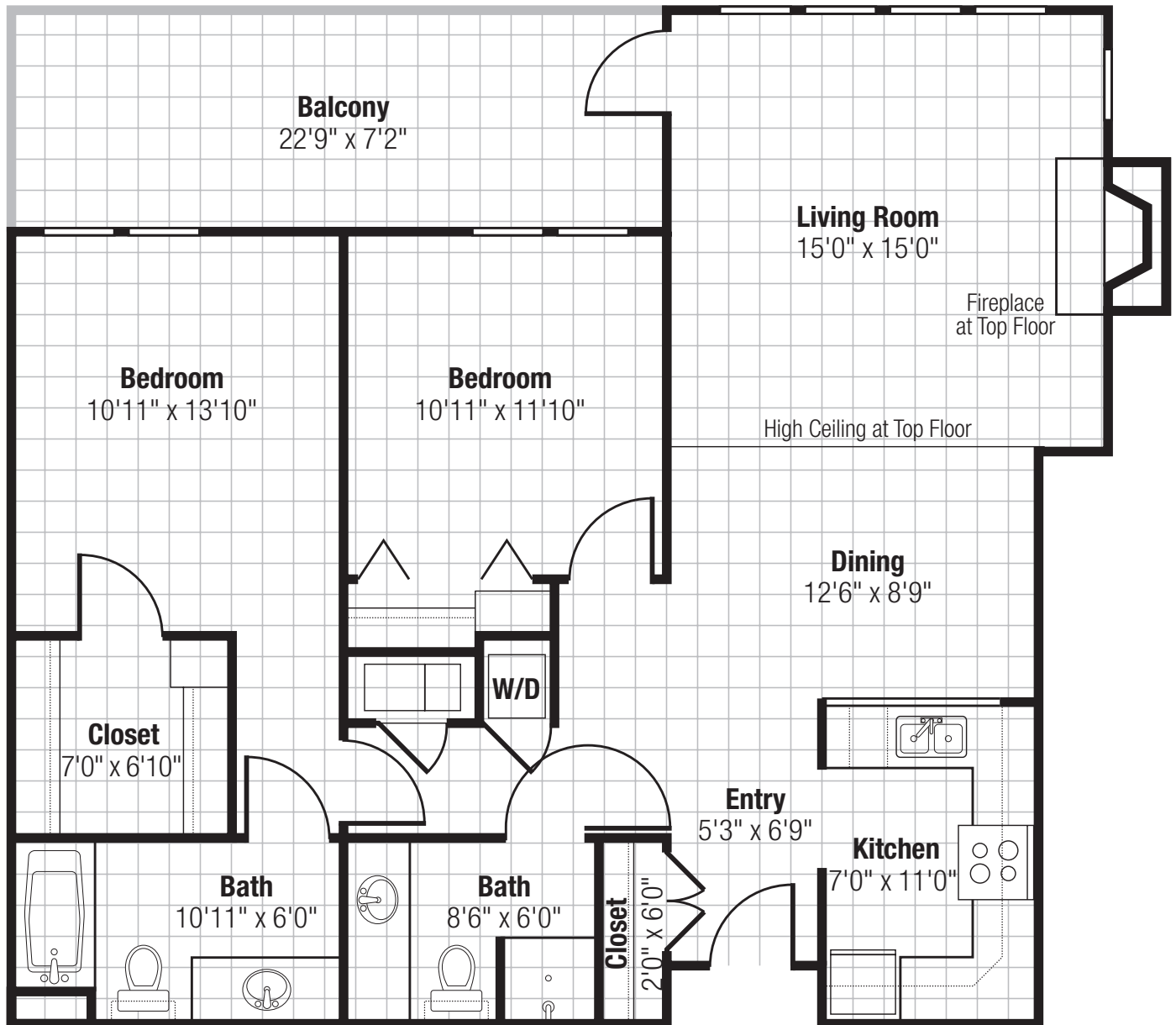
Two-Bedroom, Two-Bath

## Interior Living Space

1,100 Square Feet

## Balcony Space

167 Square Feet



Floor plans are representative. Actual measurements and layout may vary.



23500 Cristo Rey Drive, Cupertino, CA 95014  
650.944.0100 | theforum-seniorliving.com

DRE# 01940673 COA #204 CA RCFE #435200344  
Managed by Life Care Services®

# Douglas Fir

Two-Bedroom, Two-Bath

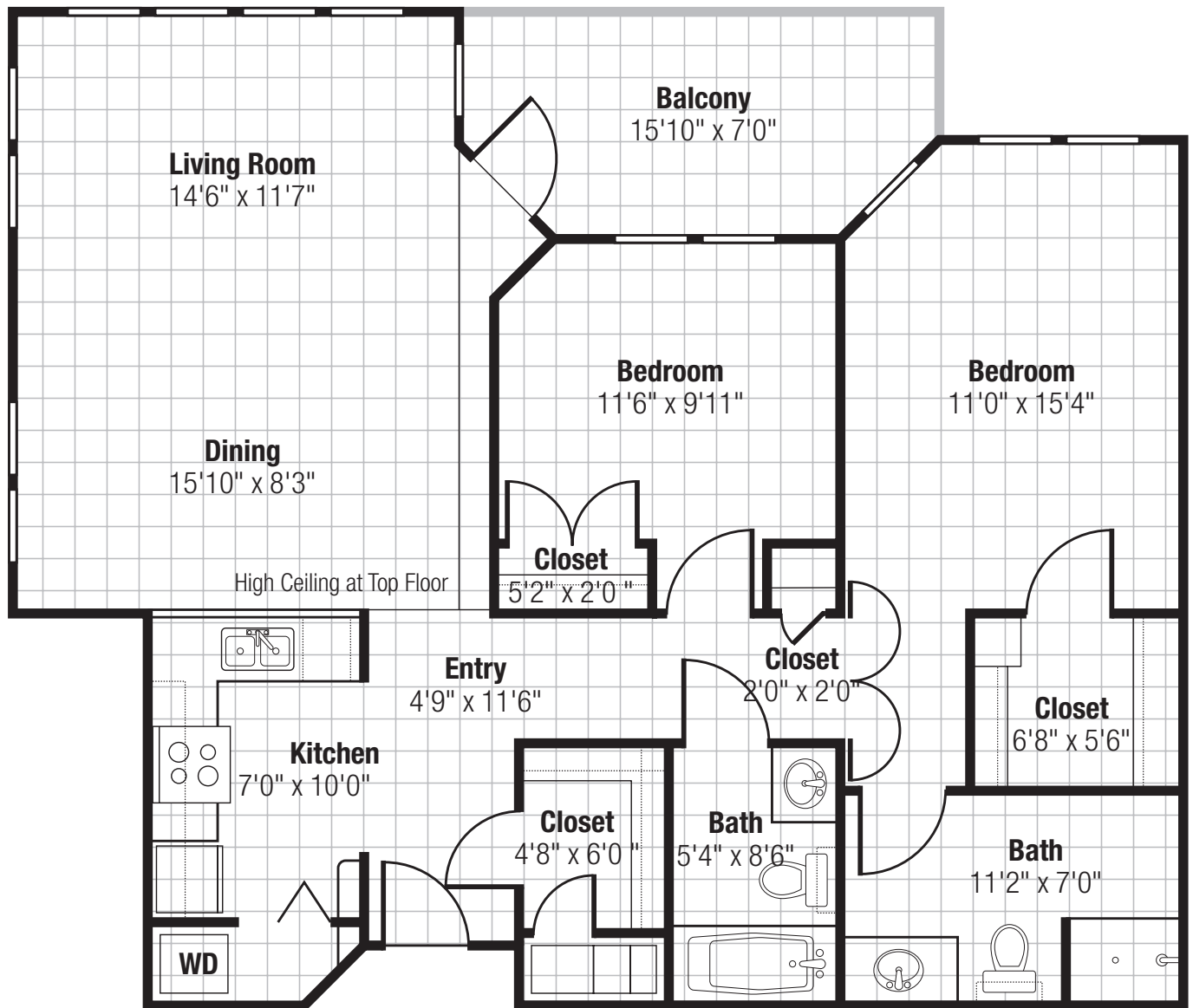
THE FORUM  
AT RANCHO SAN ANTONIO

## Interior Living Space

1,090 Square Feet

## Balcony Space

100 Square Feet



Configuration of Bathroom on First Floor is Different Due to Roll-In Shower

Floor plans are representative. Actual measurements and layout may vary.



23500 Cristo Rey Drive, Cupertino, CA 95014  
650.944.0100 | theforum-seniorliving.com

DRE# 01940673 COA #204 CA RCFE #435200344  
Managed by Life Care Services®

# Cypress

Two-Bedroom, Two-Bath

THE FORUM  
AT RANCHO SAN ANTONIO

## Interior Living Space

1,020 Square Feet

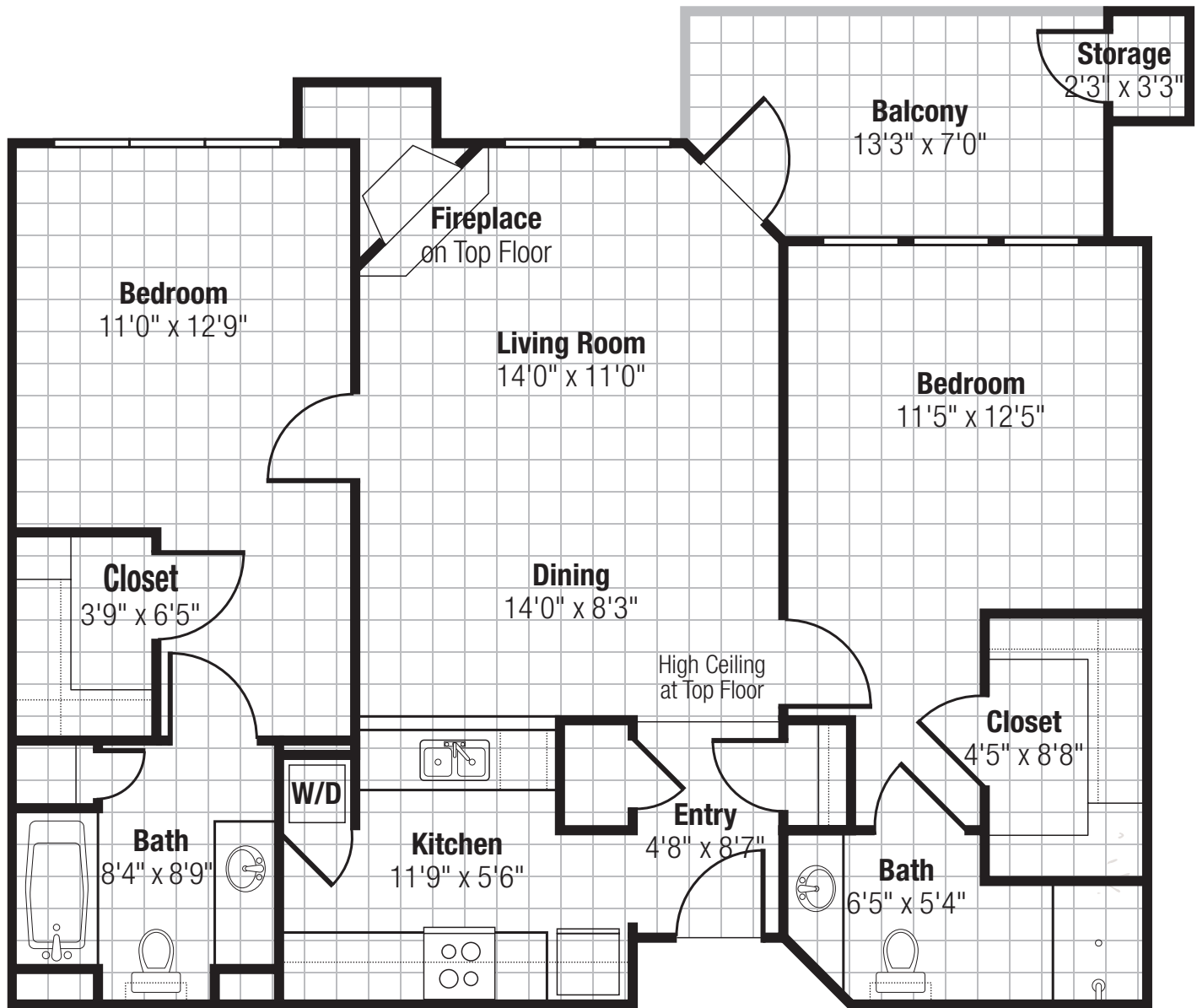
## Balcony Space

95 Square Feet

## Storage Space

7 Square Feet

Not Available  
on Corner Unit



Floor plans are representative. Actual measurements and layout may vary.



23500 Cristo Rey Drive, Cupertino, CA 95014  
650.944.0100 | theforum-seniorliving.com

DRE# 01940673 COA #204 CA RCFE #435200344  
Managed by Life Care Services®